

ACTIVESHOP[®]

User Manual

Giovanni D-21 vapozone with magnifying glass lamp



Importer:

ACTIVESHOP Ltd.
8b Graniczna St., building
DC2A 54-610 Wrocław,
Poland
www.activeshop.com.pl
Rev. A/09/2024



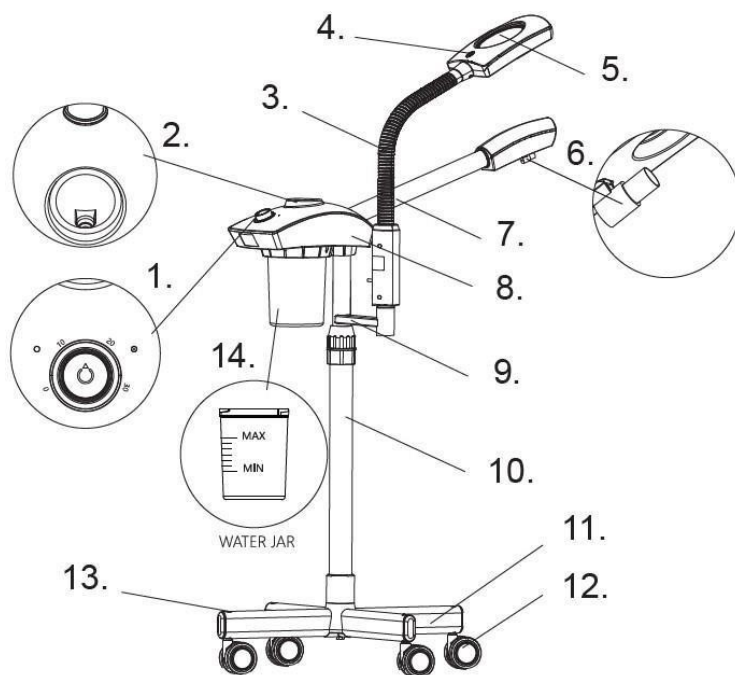
Vapozon Giovanni D-20. multifunctional vapozon with warm steam and ozone. It is characterized by high quality workmanship. Intuitive operation, creates an excellent opportunity to work in any beauty salon. Lightweight, functional with a stable tripod. Telescopic arm allows quick adjustment. The vapozone is set on a tripod with adjustable height.

DEVICE OPERATION:

1. Disinfects the skin
2. Expands pores
3. Facilitates removal of blackheads and dead skin by penetrating steam deep into the skin
4. Facilitates the secretion of toxins
5. Moisturizes and refreshes the skin
6. Stimulates skin circulation
7. Significantly improves massage results

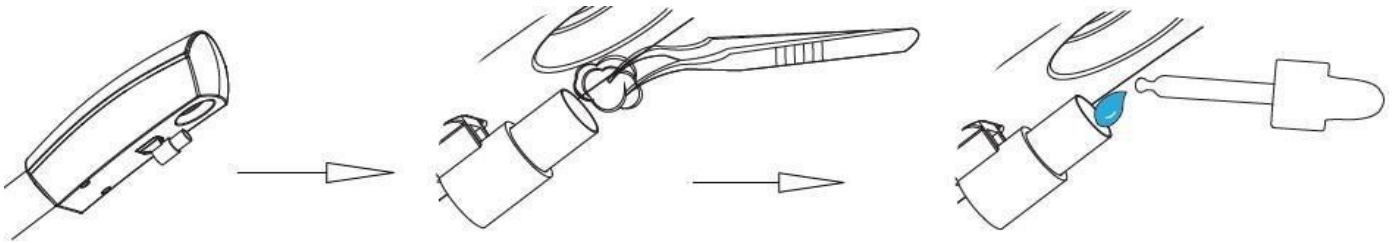
SPECIFICATIONS:

1. On/off switch and timer
2. Hole/filler
3. Gooseneck pipe
4. Light on/off switch
5. Magnifying lens x3
6. Nozzle, emitting hot steam
7. Spray pipe
8. Main body
9. Telescopic stand (top post; 2-in-1)
10. Telescopic stand (bottom post)
9. Basis
10. Wheels
13. Cover
14. Water container



INSTRUCTIONS FOR USE:

1. Place the device on a stable, flat surface.
2. Check that the hot water seal has been tightened. Refill the water level until it approaches the MAX level.
3. Turn the timer knob to set the desired operating time of the device (from 0 to 30 minutes).
4. Turn on the device by pressing the on/off button. The device will start heating the water, at the same time the UV light will come on. Steam will begin to spray after about 5 minutes after the water boils. The time may vary depending on the amount of water.
5. The UV light can be controlled individually. Press the on/off button and hold for 5 seconds, the UV light will turn on or off.
6. When the steam starts coming out, bring the device closer to the customer's face. The ideal distance between the nozzle and the customer's face is not less than 20 cm.
6. If the device is not used for a long time, pour out the water and dry the container.
7. Aromatherapy function: Place a small piece of cotton in the nozzle and sprinkle a few drops of essential oil on the cotton. The aroma will come out as the steam is sprayed.



NOTE!!!

Do not bring the device too close to the customer's face or body. This risks serious skin burns.

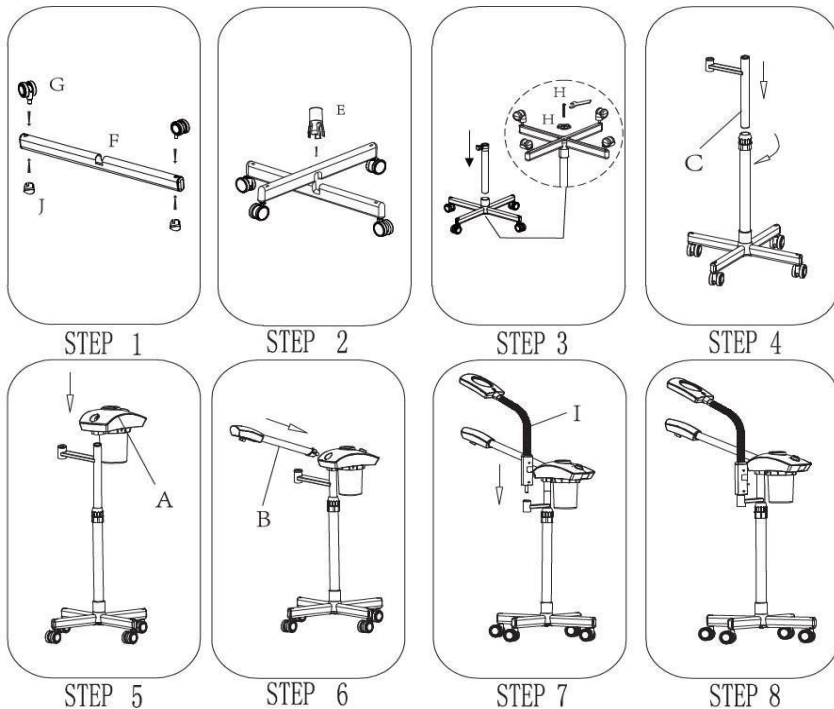
NOTE!!!

While the appliance is running, do not tilt or tip it over. Do not use the device if there is no water in it.

RECOMMENDATIONS:

1. Never leave a connected device unattended. Close supervision is necessary when this device is used by, on, or near children or people with disabilities.
2. Use the device for the purpose described in the manual.
3. Never use this device if it has a damaged cord or plug. Do not use the device if it is not working properly or if it has been dropped, damaged or fallen into water.
4. Never use the device while sleeping.
5. Use the device only on a level surface.
6. Never use the device too close to the skin, there is a risk of burns.
7. Do not add any essential oils or other additives to the water in the reservoir. Failure to do so may result in damage to the device.
8. Do not use the device if there is no water in it.
9. Do not pour any additives into the water container.
10. Clean the water tank regularly. Remember to turn off the device and unplug it before cleaning.
11. Do not touch the hot water tank.
12. When you are done, pour out the water and drain the tank.

INSTALLATION OF THE DEVICE (follow the diagram below):



NOTE!!!



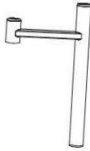

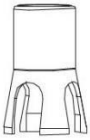


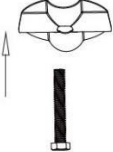


Do not use a rough cloth to clean the lens. In this way you can scratch the lens and reduce its clarity.

NOTE!!!

Do not expose unshielded eyes to direct LED light, it may cause discomfort or damage to eyesight

NOTE!!!

Clean the water container regularly. Before pulling out The water container should be disconnected from the power supply.

A:	B:	C:	D:	E:
1PCS	1PCS	1PCS	1PCS	1PCS
				
F:	G:	H:	I:	J:
2PCS	4PCS	1PCS	1PCS	4PCS
				

The height of the device can be adjusted from 78-95 cm, allowing the equipment to be positioned at the right level to maximize comfort for the person performing the treatment and the client. The LED magnifier and wapozon nozzle can be rotated to increase the range and field of the treatment.

Technical Dan

Voltage	120-220V 50/60Hz
Power	750W
Lamp brightness	1000-1600 Lx
Lamp power	9.5W

Dimensions of the device:



SECURITY MEASURES

1. The device is a professional equipment for use in beauty parlors. Operation of the device only by qualified cosmetic personnel allows to avoid undesirable consequences during the treatment.
2. Do not disassemble the device or attempt to use it for purposes other than those indicated in this manual. Any service and repair work must be performed only by an authorized service technician (ACTIVESHOP Ltd.).
3. Do not install or operate the device near liquids, wet places or with wet hands - so that no liquids get into the device.
4. Immediately remove the plug from the outlet and contact an authorized service provided by ACTIVESHOP Ltd. in the following cases: a) liquid has entered the device, b) the device emits a strange smell, smoke or makes strange sounds, c) the power cord has been damaged, d) the device has been knocked over or its housing has been damaged.
5. Do not put any objects on the cables. Do not install the unit where someone may step on the power cord.
6. For safety purposes, unplug the power cord from the outlet each time you finish working with the device.
7. Do not insert anything into the opening of the device. If a foreign object gets into the hole, remove the cord from the outlet and contact the distributor or manufacturer.

8. Do not place the device on an unstable cart, shelf or vehicle. If dropped, the device may be damaged.
9. In order to guarantee the established useful life of the device, it is recommended to keep an interval of one minute before pressing the power button again (between switching on and off and vice versa).
10. The power supply must comply with the specifications on the nameplate. Otherwise, there is a risk of incorrect operation of the device its damage or even burning.

NOTES:

1. In case of damage to the power cord or other malfunctions, contact an authorized service center - this will avoid danger.
2. This equipment may be used by children at least 8 years of age and by persons with impaired physical and mental capabilities and persons with inexperience and lack of familiarity with the equipment, if supervision or instruction is provided regarding the use of the equipment in a safe manner so that the associated risks are understood.
3. The device is not intended for play by children. Do not allow children to play with the device.
4. Do not leave the device unattended when children or persons without sufficient knowledge of how to use the device are in the vicinity.
5. This electrical appliance is not a toy. Improper use or contact with the electrical appliance may pose a health risk or lead to death, so use and store the appliance out of the reach of children.



DISPOSAL OF THE DEVICE

Dispose of used electrical appliances, fixtures and packaging to raw material reprocessing centers in accordance with environmental protection principles. Electrical appliances should not be thrown into household waste containers. Follow the rules for discarding this type of equipment. In order to protect the environment in accordance with Directive 2012/19/EC Concerning waste electrical and electronic equipment, waste electrical equipment should be collected separately and then transferred to collection centers for waste electronic and electrical equipment.

At the end of their useful life, as well as old appliances contain full-value recyclable components, so they should be handed over for recycling. Therefore, they should be handed over to appropriate collection points, as well as they can also be handed over to ACTIVESHOP Ltd.

STORAGE AND TRANSPORT

The device should be transported at a temperature in the range of (-)20°C to (+)50°C only in its original packaging. Store the device in a well-ventilated room and a relative humidity of no more than 75%. Operating temperature from (+)10°C to (+)40°C. During the storage and transportation processes, the device must not be thrown or dropped, exposed to mechanical shocks or atmospheric agents.